



Article Number - 00050-2013

Date - 24<sup>th</sup> April 2013

Article applies to - iNavHub

## **ISSUE: Changing the SSID and Password of iNavHub**

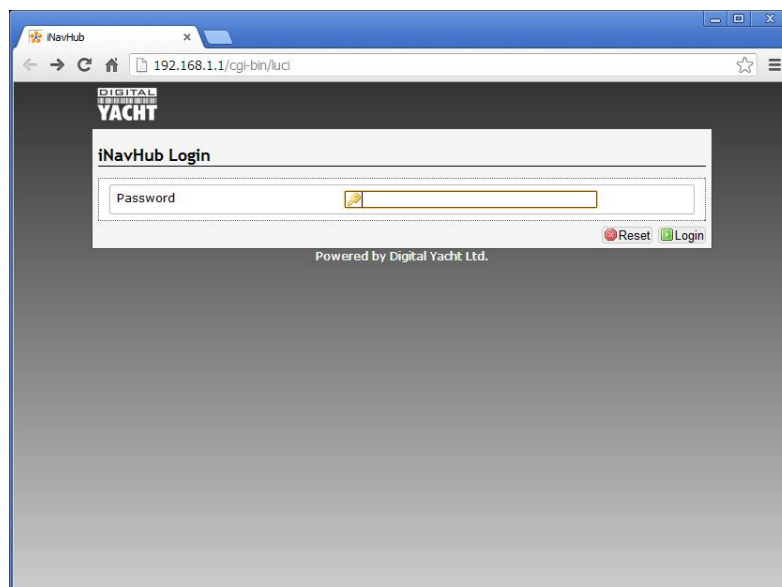
All iNavHubs are shipped with the wireless network SSID set to “iNavHub” and the wireless password (passkey) set to “inavhubpass”. If you are using the iNavHub with a Raymarine E-Series and Navionics app, security is not critical and these default settings are probably fine. If you are using iNavHub as a router at the heart of your boat’s wireless network, then it is recommended that you change the SSID and password to more unique and secure values.

This Tech Note, explains how to configure the SSID and Password on your iNavHub.

## **SOLUTION:**

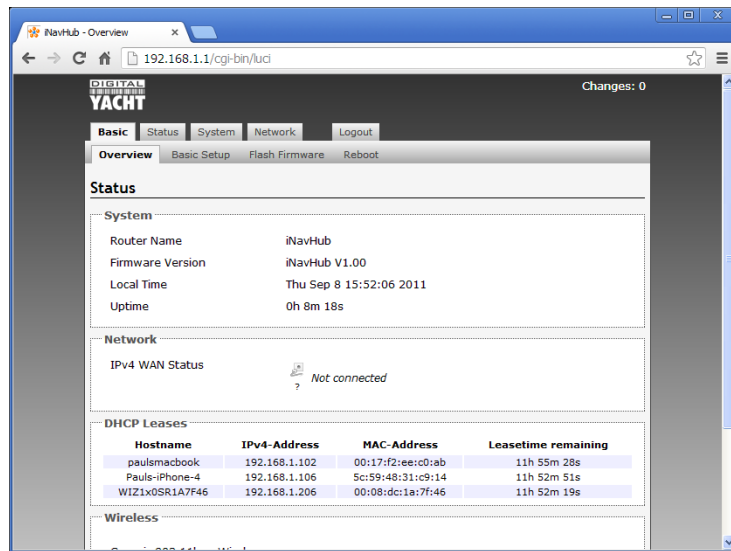
Connect your PC directly to the LAN socket on your iNavHub using a normal Ethernet network cable. From your web browser, type in 192.168.1.1 in the address bar and press the return (enter) key.

You should see the iNavHub login page as shown below.

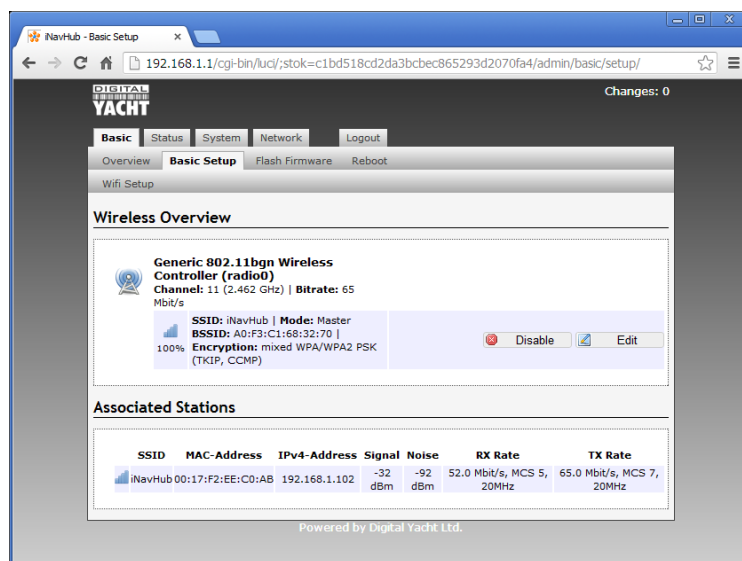


Login by typing the password “inavhub” (all lower case) without the quotation marks in to the Password box and then click the **Login** button.

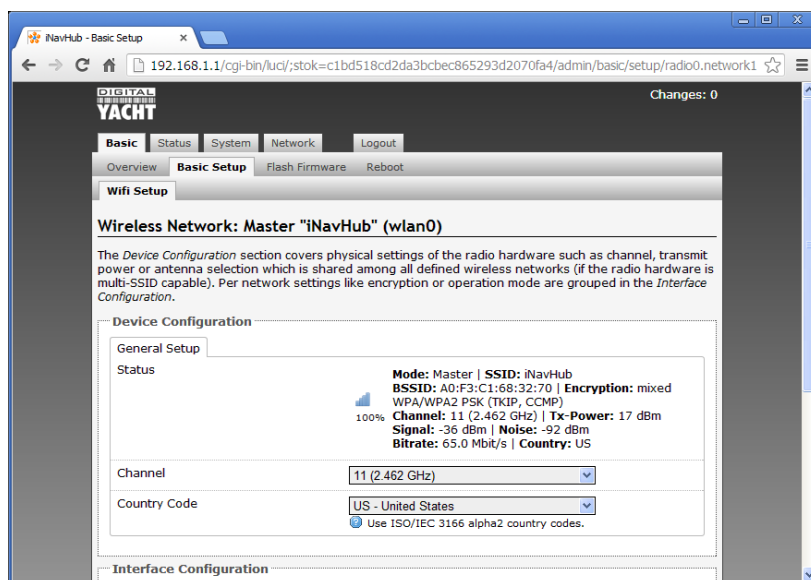
Assuming you have typed the password correctly, you should now be logged in and be able to see the **Overview** page as shown in the next image ...



On the upper sets of Tabs, click on the **Basic Setup** tab and you will see the page shown below...

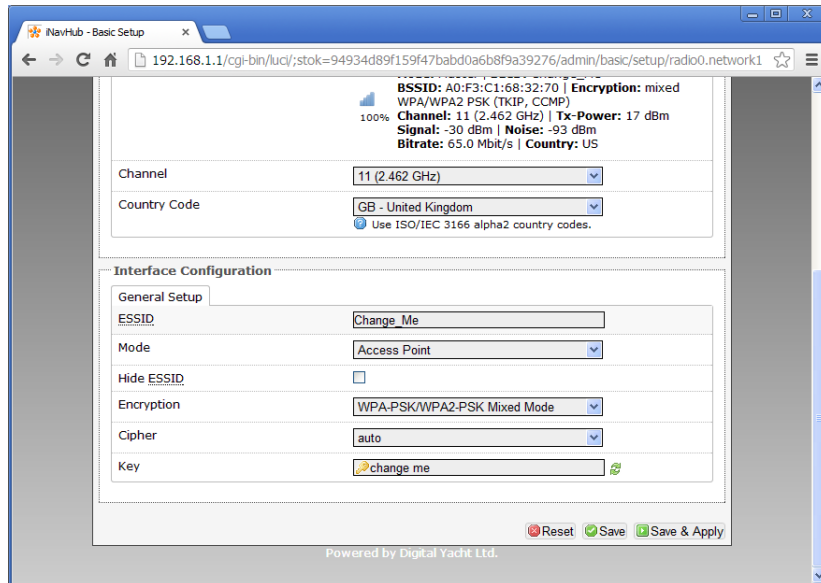


On the right hand side of the main window, click on the **Edit** button and you will see the screen below...



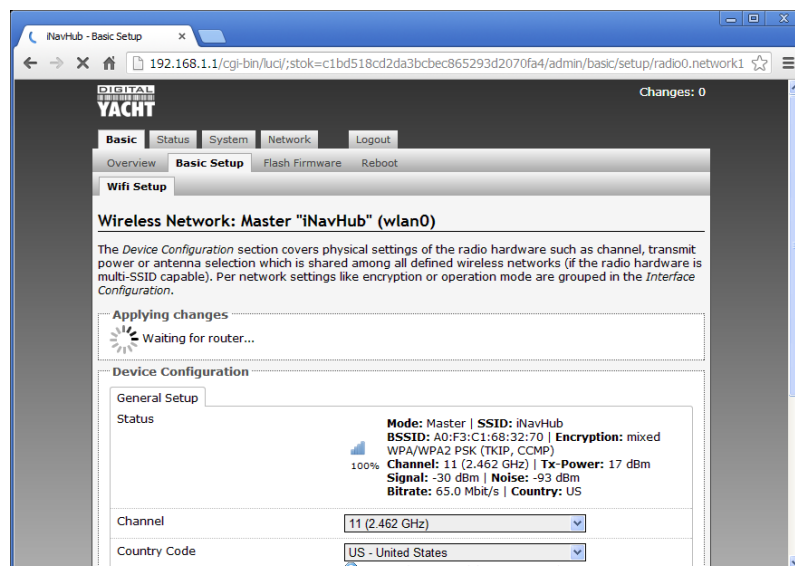
If you have not already done so, select the correct country code for the iNavHub. After selecting the correct country from the drop down list, click on the **Save** button at the bottom of the page.

Now change the “ESSID” field to a name for your network. In the example below I have used “Change Me”, but for maximum compatibility with wireless devices, it is better if you avoid the use of spaces and other special characters. If you want a multiple word SSID, use the underscore character i.e. Change\_Me



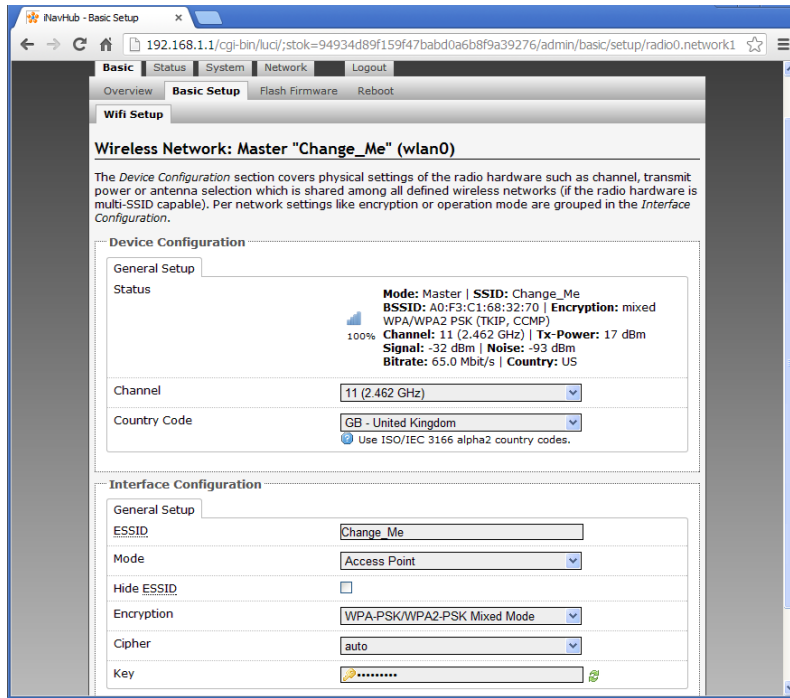
After setting the SSID, change the “Key” field to set the password. Click on the two green arrows icon to the right of this entry box to display the password that you have typed, rather than \*\*\*\*\*.

Once the SSID and Password have been entered, click on the **Save+Apply** button at the bottom of the page. The page will now refresh and at the top of the page it will say “Collecting Data” as it analyses the changes made and then you will see a rotating timer type icon and a message that says “Applying Changes”.



After about 15-20 seconds the changes are applied and the iNavHub will reboot with the new settings.

You should see a screen like the one below with the new SSID displayed and the new password shown with the \*\*\*\*\*. You can click the two green arrows icon to read the password and make sure it is correct.



Changing the wireless password does not change the password you use to login to the iNavHub web interface which will remain as “inavhub”.

If you forget your new wireless password, you can easily repeat this process and change it to another password or check the one that you have set, by connecting the PC to the iNavHub via the network cable and logging in to the web interface again.

It is strongly recommended that you do not make any other changes to the iNavHub settings unless you are experienced in computer networks. Digital Yacht cannot support problems that are caused by changes to our default/recommended iNavHub settings.

If you wish to reset the iNavHub to the factory default settings, click on **System>Backup/Flash Firmware** and then click on the **Perform Reset** button.