



Article Number - 00044-2012

Date - 1st November 2012

Article applies to - AIT2000

ISSUE: Using AIT2000 with OpenCPN on a Mac or LINUX PC

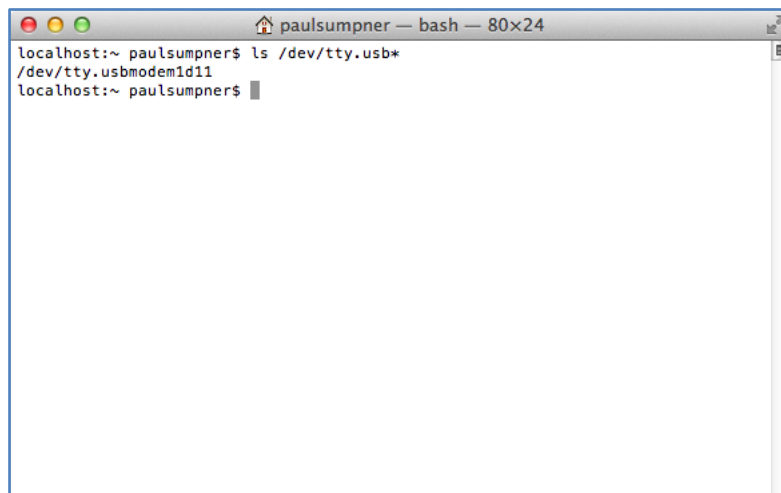
Recently we have been testing our AIT2000 Class B Transponder with the popular OpenCPN which is a very good Open Source (free) navigation software for Windows/Mac/LINUX.

We had previously released a Tech Note 00035-2012 that explained how to get our AIS units to work with OpenCPN but we noticed that our new AIT2000 was not being detected properly by OpenCPN on Macs or LINUX PCs. This Tech Note provides a very simple fix to this problem.

SOLUTION:

First it is necessary to plug in the USB cable of your AIT2000, in to a spare port on your Mac or LINUX PC. Then you need to find out what device name has been allocated by the operating system to the AIT2000. For both Macs and LINUX PCs the easiest way is to open a Terminal window;

For Macs, in Finder, click GO>Utilities and run the Terminal.app program. Then type “ls /dev/tty.usb*” which will then display the device name given to the AIT2000, in this example “/dev/tty.usbmodem1d11” (see Fig.1). Make a note of this device name as we will need to enter this in OpenCPN.



```
localhost:~ paulsumpner — bash — 80x24
localhost:~ paulsumpner$ ls /dev/tty.usb*
/dev/tty.usbmodem1d11
localhost:~ paulsumpner$
```

Figure 1

For LINUX PCs, it will depend upon which distribution you are using but for Ubuntu, click “Applications>Accessories>Terminal”. Then type “ls /dev/ttyA*” which will then display the device name given to the AIT2000, in this example “/dev/ttyACM0” (see Fig.2). Make a note of this device name as we will need to enter this in OpenCPN.

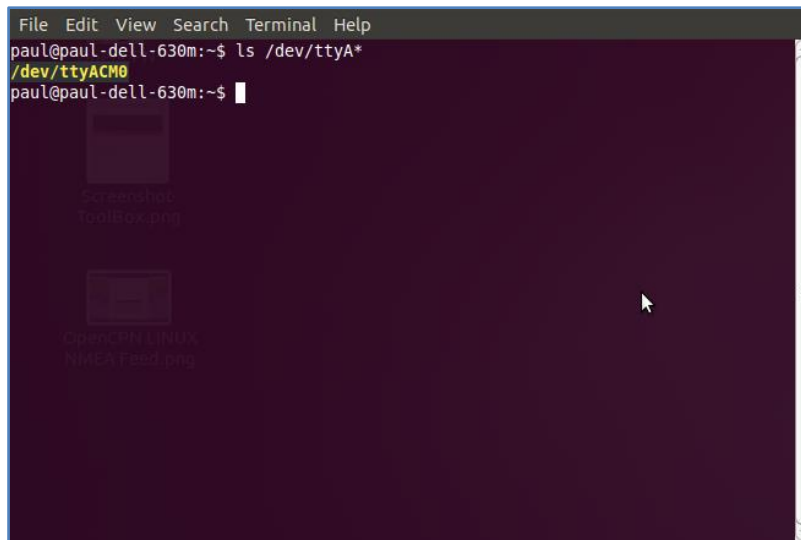
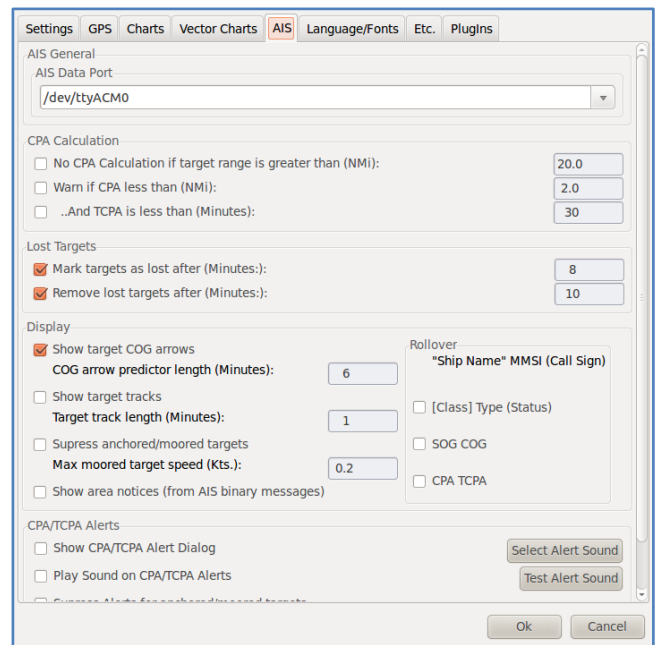
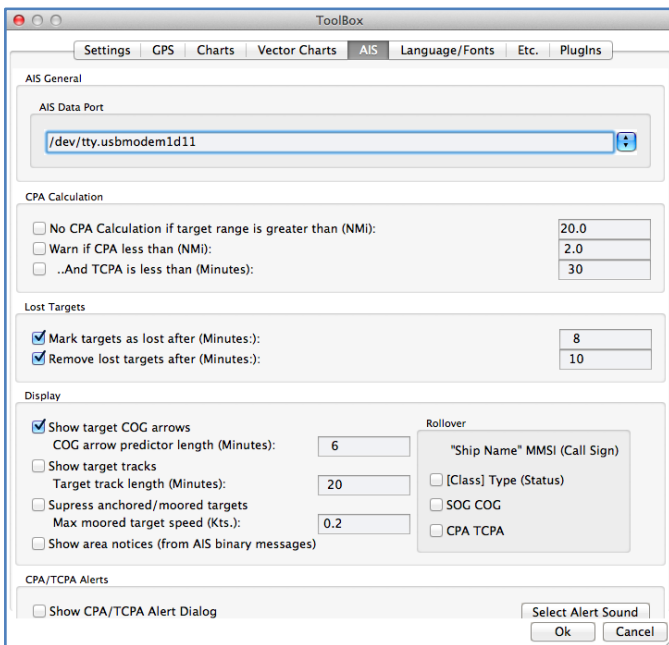


Figure 2

Now it is necessary to manually type this device name in to the OpenCPN Setting for the AIS Data Port (AIS Tab) as shown in Fig.3 for Macs and Fig.4 for LINUX.



Now click the OK button and your AIT2000 should now be sending AIS and GPS data to your OpenCPN program. Make sure that you have set the "NMEA Data Source" to "AIS Port (Shared)" in the GPS tab of the OpenCPN settings window.

The only known issue is that you may have to unplug and then reconnect your AIT2000 if the Mac or LINUX PC has been put to sleep and then woken up again. It is recommended that when using a computer for navigation at sea, that the power management settings are configured so that the computer is always ON, as there are many cases of USB devices being "lost" when a computer wakes up from being in a Sleep/Suspended mode.