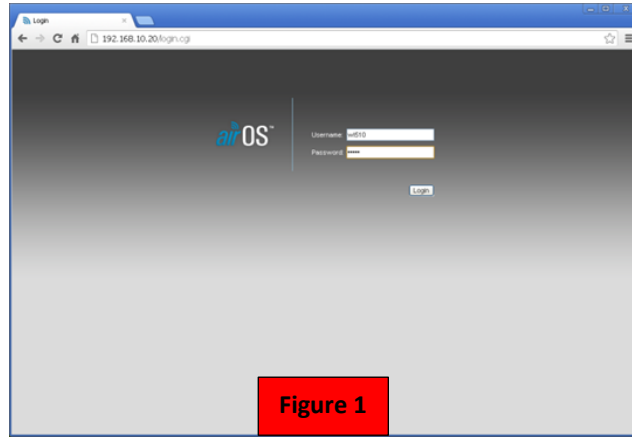


WL450 Getting Connected Guide

In your computer's Browser type 192.168.10.20 in the address bar

You should see the login page shown in Fig 1

EXPERT TIP – Bookmark this page so you do not have to remember this IP address

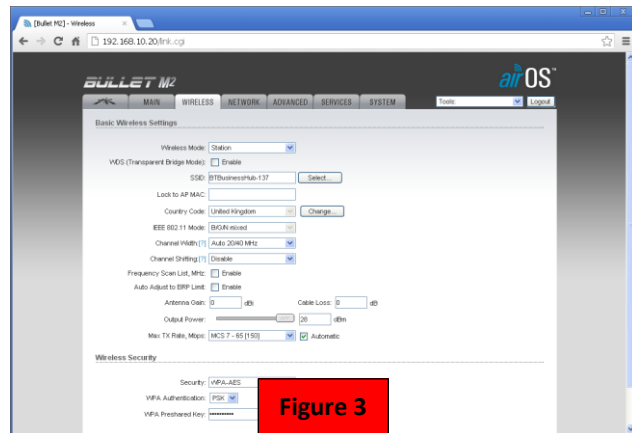
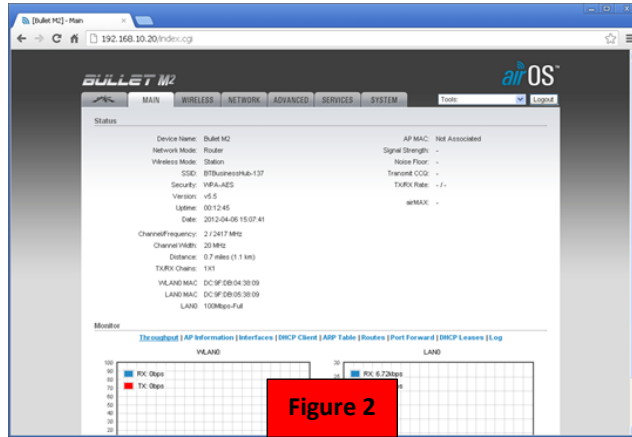


Login by typing "wl450" in to the Username and Password boxes.

Once logged in, you will see the Main page shown in Fig 2, where you can see that the WL450 is not connected (associated) with a wireless hotspot.

Click on the "Wireless" tab and you will display the window shown in Fig 3 and then click the "Select" button to scan for available wireless networks (Hotspots) which will appear in a new pop up window (see Fig4)

EXPERT TIP – The list can be sorted in various ways, by clicking on the column label



Select the wireless network that you wish to connect to by clicking on the tick box at the start of the line.

Now click on the "Select" button. You will now be returned to the page in Fig 3 and if the network is password protected, the cursor will be in the enter password box.

Once you have entered the correct password (if necessary) click the "Change" button at the bottom of the page, followed by the "Apply" button that will appear at the top of the page.

After 5-10secs, the WL450 will have finished connecting to the hotspot and if you click on the "Main" tab, you will see a page similar to that in Fig 5, showing the name of the hotspot (SSID) and a coloured signal strength meter that shows you are connected (associated).

